

## British Standard BS88 690V: 6-710A



### Description

The fuse wire of BS88 fuse is silver, which is filled with quartz sand. There are two designs: single tube and double tube. Double-tube design can be used in larger current environment, it has faster fusing speed and lower  $I^2t$  value, which can more effectively protect semiconductor components and equipment from short-circuit damage.

### Ratings

Volts: 690VAC/600VDC

Amps: 6 - 710 A

I.R. AC: 100KA/200KA

Speed/Characteristic: aR

Body Style: British Standard BS88

Material Body: Ceramic

Contact Materials: Silver plated copper

Environmental RoHS Compliant

### Standards

IEC 60269-1

IEC 60269-4

### Features and Benefits

Ultra fast acting

Excellent dc performance

Low arc voltage and low energy let-through ( $I^2t$ )

Low watts loss

### Typical Applications

DC common bus

DC drives

Power converters/rectifiers

Reduced voltage starters

**British Standard BS88 690V: 6-710A**

Fig.1:AS09

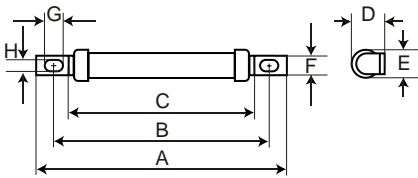


Fig.2:AS17

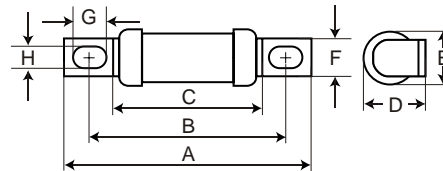


Fig.3:AS17D

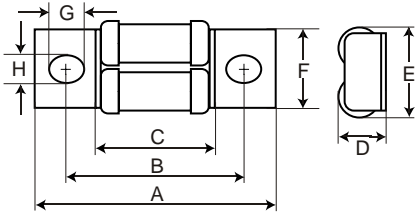


Fig.4:AS38

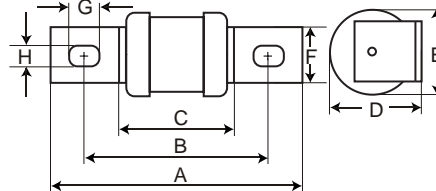
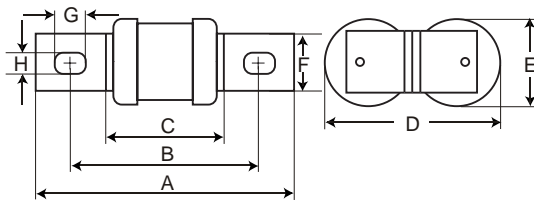


Fig.5:AS38D



**Dimensions (mm)**

Size	Amp	A	B	C	D	E	F	G	H
AS09	6-20A	74.6	64	54.8	8.7	8.7	6.4	5.5	4
AS17	25-100A	77	64	48	19.1	17.1	13	9.7	7
AS17D	90-200A	94	71	46	19	37	31.8	12	8.7
AS38	160-355A	113	85	50	42	38	25	13.5	10.3
AS38D	180-710A	113	85	50	84	38	25	14	10.3

1mm = 0.0394" / 1" = 25.4mm

## British Standard BS88 690V: 6-710A

### Catalog Numbers

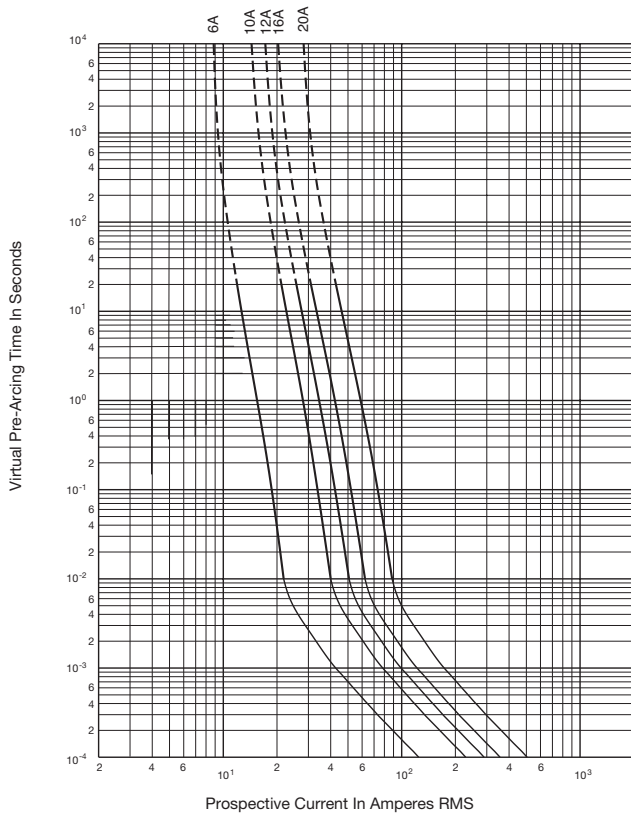
Electrical Characteristics						Ordering Information	
Size	Voltage	Rated Current	Pre-arcing I <sup>2</sup> t (A <sup>2</sup> s)	Clearing I <sup>2</sup> t @ Rated Voltage (A <sup>2</sup> s)	Watts Loss	Part number	Figure Number
8.5x54.8mm	690VAC/ 600VDC	6	1.8	12	2W	AS09-6A	Fig.1
		10	7	48	3W	AS09-10A	
		12	10	65	3W	AS09-12A	
		16	16	110	7W	AS09-16A	
		20	32	220	7W	AS09-20A	
17x48mm	690VAC/ 600VDC	25	25	250	7W	AS17-25A	Fig.2
		32	32	350	11W	AS17-32A	
		35	52	500	11W	AS17-35A	
		40	103	900	9W	AS17-40A	
		45	103	1100	11W	AS17-45A	
		56	135	1500	14W	AS17-56A	
		63	171	2000	16W	AS17-63A	
		80	250	1500	20W	AS17-80A	
		90	360	2100	20W	AS17-90A	
		100	470	2800	23W	AS17-100A	
2x17x48mm	690VAC/ 600VDC	90	490	4500	19W	AS17D-90A	Fig.3
		100	400	2400	24W	AS17D-100A	
		110	600	6500	27W	AS17D-110A	
		120	540	3100	32W	AS17D-120A	
		140	850	3800	36W	AS17D-140A	
		160	1000	5700	46W	AS17D-160A	
		180	1400	8400	46W	AS17D-180A	
		200	1900	11400	52W	AS17D-200A	
38x60mm	690VAC/ 600VDC	160	2400	25000	26W	AS38-160A	Fig.4
		180	3800	38000	26W	AS38-180A	
		200	6000	58000	27W	AS38-200A	
		250	11500	110000	32W	AS38-250A	
		280	16500	150000	35W	AS38-280A	
		315	19000	180000	42W	AS38-315A	
2x38x60mm	690VAC/ 600VDC	355	22000	200000	51W	AS38-355A	Fig.5
		180	1650	18000	42W	AS38D-180A	
		200	2200	23000	42W	AS38D-200A	
		225	3700	40000	42W	AS38D-225A	
		280	6600	70000	47W	AS38D-280A	
		315	8600	91000	51W	AS38D-315A	
		355	13500	140000	54W	AS38D-355A	
		400	21000	220000	60W	AS38D-400A	
		450	30000	320000	57W	AS38D-450A	
		500	42000	450000	64W	AS38D-500A	
		560	60000	640000	64W	AS38D-560A	
		630	68500	720000	86W	AS38D-630A	
		710	78000	850000	105W	AS38D-710A	

- Interrupting rating 100KA RMS Symmetrical. Please contact us if you need interrupting rating 200KA.
- Watts loss provided at rated current.
- CE Component Acceptance: 6 - 710A.

**British Standard BS88 690V: 6-710A**

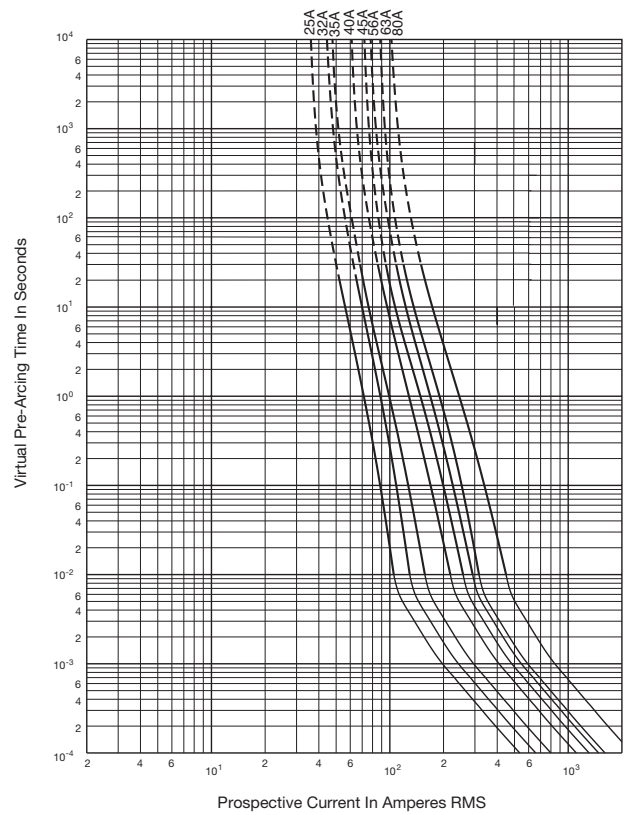
**AS09 690V: 6-20A**

Time-Current Curve

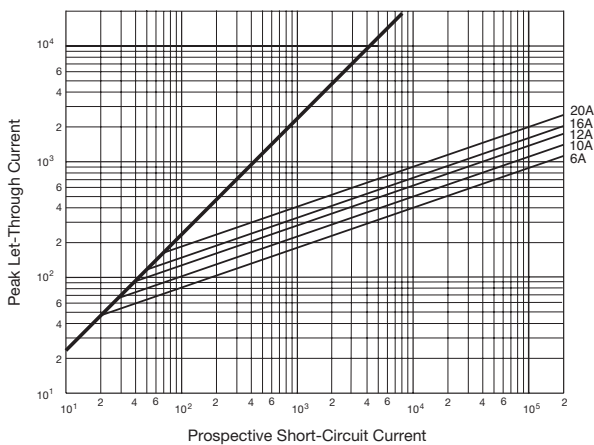


**AS17 690V: 25-100A**

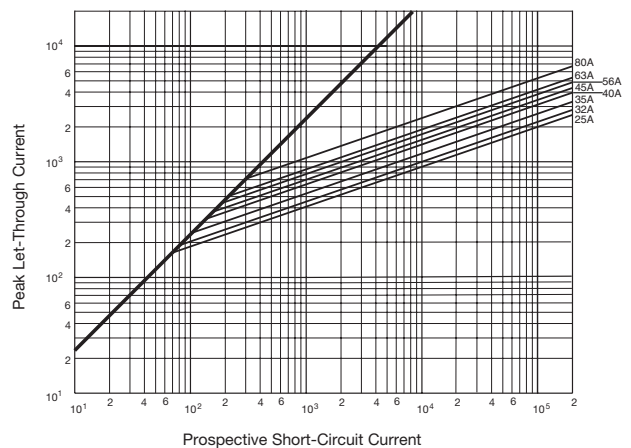
Time-Current Curve



**Peak Let-Through Curve**



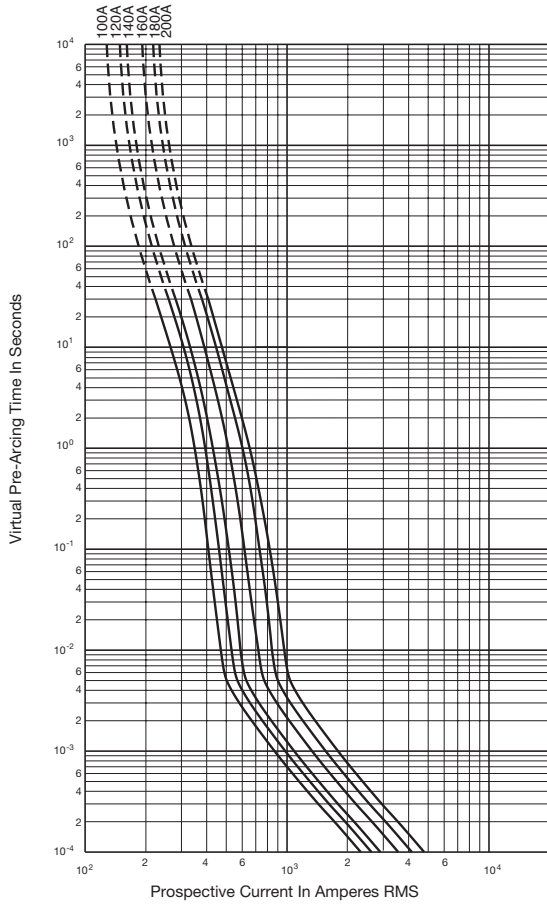
**Peak Let-Through Curve**



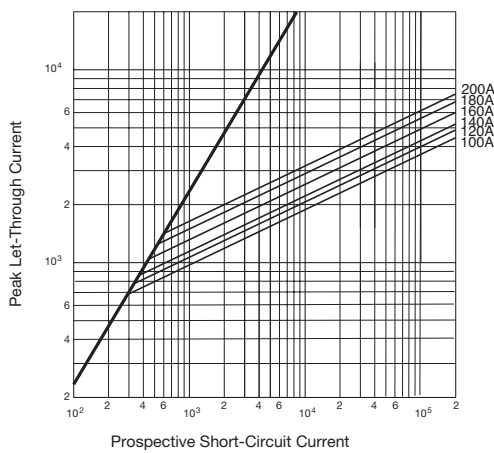
**British Standard BS88 690V: 6-710A**

**AS17D 690V: 90-200A**

Time-Current Curve

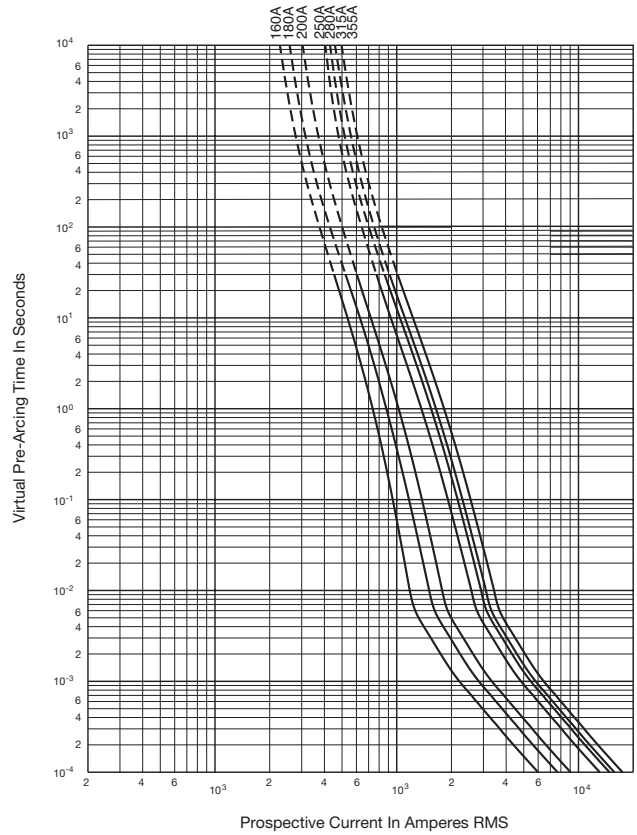


Peak Let-Through Curve

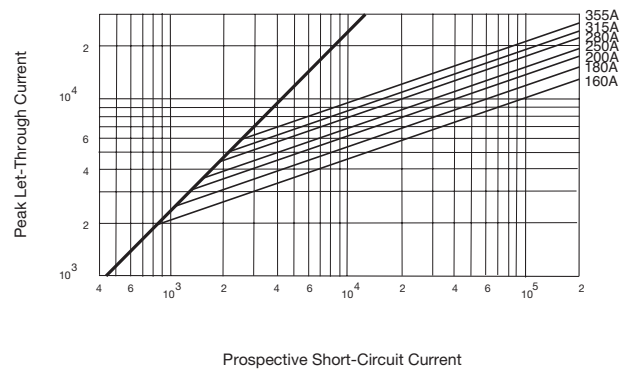


**AS38 690V: 160-355A**

Time-Current Curve



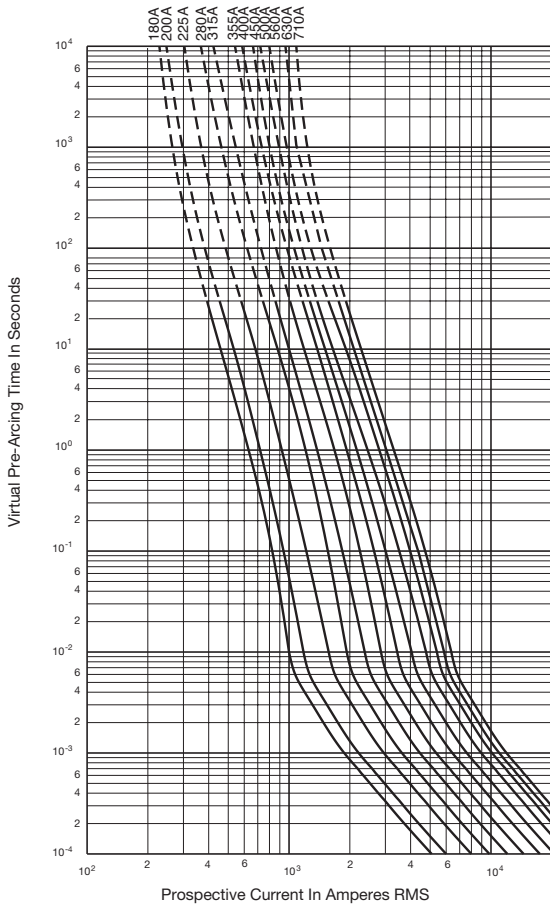
Peak Let-Through Curve



**British Standard BS88 690V: 6-710A**

**AS38D 690V: 180-710A**

Time-Current Curve



Peak Let-Through Curve

